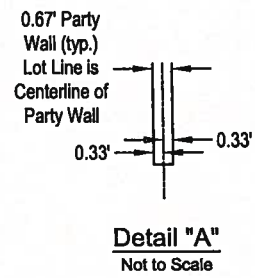


DESCRIPTION: LOT 17, COVE AT INDIAN ROCKS BEACH AS RECORDED IN PLAT BOOK 139, PAGES 43 - 45, OF THE PUBLIC RECORDS OF PINELLAS COUNTY, FLORIDA.

# BOUNDARY & AS-BUILT SURVEY

**BASIS OF BEARINGS:**  
THE EASTERLY BOUNDARY  
LINE OF LOT 18  
BEARS S.00°32'00"W. PER PLAT.

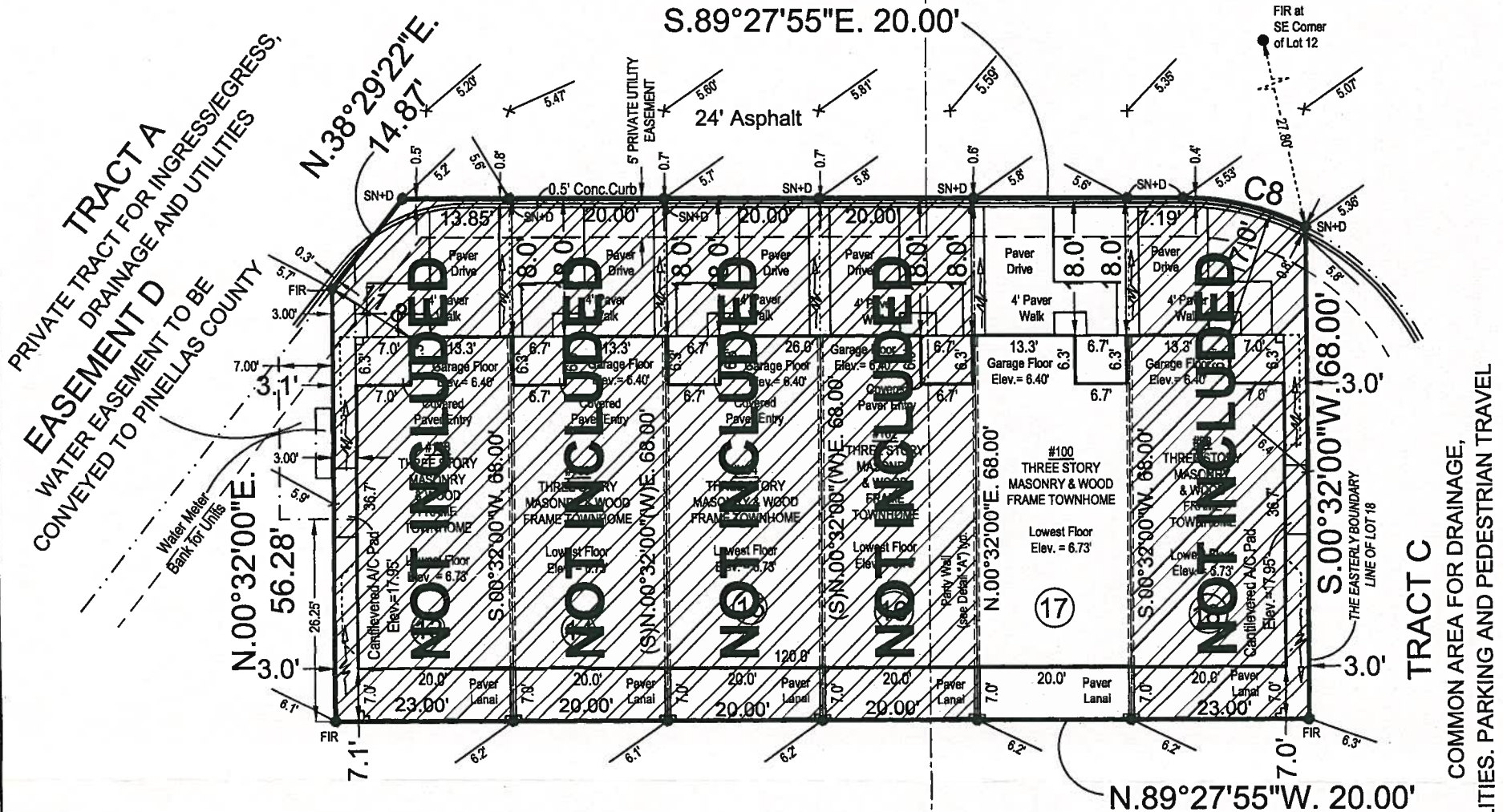
① = Lot Number



THE PROPERTY DESCRIBED HEREON IS LOCATED IN FLOOD ZONE "AE" (BASE FLOOD ELEV.= 10' [NAVD 88]) PER FLOOD INSURANCE RATE MAP NUMBER 12103C 0113G, EFFECTIVE DATE SEPTEMBER 03, 2003. COMMUNITY No. 125117C PANEL 0113 G.

## TRACT A

PRIVATE TRACT FOR INGRESS/EGRESS,  
DRAINAGE AND UTILITIES



## TRACT C

COMMON AREA FOR DRAINAGE,  
UTILITIES. PARKING AND PEDESTRIAN TRAVEL

BASE FLOOD  
ELEV. = 11'

BASE FLOOD  
ELEV. = 10'

Approximate Flood Zone  
Transition Line

### LEGEND:

- A = ARC
- ACEE = ARMY CORPS OF ENGINEERS
- BWF = BARBED WIRE FENCE
- C = CURVE
- CA = CALCULATED
- CATV = CABLE TELEVISION RISER
- CB = CHORD BEARING
- CCR = CERTIFIED CORNER RECORDS
- CCD = COMMUNITY DEVELOPMENT DISTRICT
- CH = CHORD
- CI = CURB INLET
- CLF = CHAIN LINK FENCE
- CLP = CONC. LIGHT POLE
- CMP = CORRUGATED METAL PIPE
- CONC = CONCRETE
- COT = CITY OF TAMPA
- CL = CENTERLINE
- D.E. = DRAINAGE EASEMENT
- DAEA = DRAINAGE AND ACCESS EASEMENT
- DAE = DRAINAGE AND INGRESS/EGRESS EASEMENT
- DAU = DRAINAGE AND UTILITY ELEVATION
- EPHC = ENVIRONMENTAL PROTECTION COMMISSION OF HILLSBOROUGH COUNTY
- ESMT = EASEMENT
- FCM = FOUND CONCRETE MONUMENT
- FP = FOUND IRON PIPE
- FR = FOUND IRON ROD, LB 3913 (UNLESS OTHERWISE NOTED)
- FND = FOUND
- FFK = FOUND PARKER-KALON NAIL
- F.G.F.W.F.C.C.E. = FLORIDA GAME AND FRESH WATER FISH COMMISSION CONSERVATION EASEMENT
- FND = FOUND NAIL & DISK, LB 3913 (UNLESS OTHERWISE NOTED)
- FRRS = FOUND RAILROAD SPIKE
- GA = GUY ANCHOR
- HOA = HOMEOWNERS ASSOCIATION
- HDPE = HIGH DENSITY POLYETHYLENE PIPE
- ID = IDENTIFICATION
- LB = LICENSED BUSINESS
- LS = LANDSCAPE
- LS = LICENSED SURVEYOR
- MEG = MATCH EXISTING GRADE
- MH = MANHOLE
- (NR) = NON-RADIAL
- NAVD = NORTH AMERICAN VERTICAL DATUM 1988
- NGVD = NATIONAL GEODETIC VERTICAL DATUM 1929
- NTS = NOT TO SCALE
- O.R. = OFFICIAL RECORDS
- OUL = OVERHEAD UTILITY LINES
- (P) = PLAT
- PAGP = PER APPROVED GRADING PLAN
- PAGSDP = PER APPROVED GRADING AND DRAINAGE PLAN
- PLB = PLAT BOOK
- PI = POINT OF INTERSECTION
- PC = POINT OF CURVATURE
- POC = POINT OF COMPOUND CURVE
- PCP = PERMANENT CONTROL POINT
- PRC = POINT OF REVERSE CURVE
- POB = POINT OF BEGINNING
- POC = POINT OF COMMENCEMENT
- PRM = PERMANENT REFERENCE MONUMENT
- PLS = PROFESSIONAL LAND SURVEYOR
- PSM = PROFESSIONAL SURVEYOR & MAPPER
- PASP = PER APPROVED SIDEWALK PLAN
- PL = PROPERTY LINE
- PVC = POLYVINYL CHLORIDE
- (R) = RADIAL
- RAD = RADIUS
- RCP = REINFORCED CONCRETE PIPE
- REG = REGISTERED
- R/W = RIGHT-OF-WAY
- (S) = SURVEY
- SEC = SECTION
- TWP = TOWNSHIP
- RGE = RANGE
- SIR = 5/8" SET IRON ROD LB 3913
- SN+D = SET NAIL & DISK LB 3913
- SPK = SET PARKER-KALON NAIL
- SWFWMD = SOUTH-WEST FLORIDA WATER MANAGEMENT DISTRICT
- TBM = TEMPORARY BENCHMARK
- TYP. = TYPICAL
- UDAE = UTILITY AND DRAINAGE INGRESS/EGRESS EASEMENT
- U.E. = UTILITY EASEMENT
- WC = WITNESS CORNER
- WCCL = WETLAND CONSERVATION EASEMENT LINE
- WCASL = WETLAND CONSERVATION AREA SETBACK LINE
- WF = WOOD FENCE
- WLBE = WALL LANDSCAPE AND BUFFER EASEMENT
- WATER METER
- WATER VALVE
- FIRE HYDRANT
- HUB & TACK SET
- LATH SET
- UTILITY POLE
- ELEV.



- NOTES:**
- NO UNDERGROUND INSTALLATION OR IMPROVEMENTS HAVE BEEN LOCATED EXCEPT THOSE SHOWN HEREON.
  - LANDMARK ENGINEERING & SURVEYING CORPORATION'S CERTIFICATE OF AUTHORIZATION NUMBER TO PROVIDE SURVEYING SERVICES IS LB3913.
  - THIS DRAWING NOT VALID WITHOUT THE SIGNATURE AND ORIGINAL SEAL OF A FLORIDA REGISTERED SURVEYOR & MAPPER.
  - AS USED ON THIS DRAWING, CERTIFY MEANS TO STATE OR DECLARE A PROFESSIONAL OPINION OF CONDITIONS REGARDING THOSE FACTS OR FINDINGS WHICH ARE THE SUBJECT OF THE CERTIFICATION AND DOES NOT CONSTITUTE A WARRANTY OR GUARANTEE, EITHER EXPRESSED OR IMPLIED. THIS CERTIFICATION IS ONLY FOR THE LANDS AS DESCRIBED. IT IS NOT A CERTIFICATE OF TITLE, ZONING, EASEMENTS OR FREEDOM OF ENCUMBRANCES.
  - NO INSTRUMENTS OF RECORD REFLECTING EASEMENTS, RIGHTS-OF-WAY AND/OR OWNERSHIP WERE FURNISHED THIS SURVEYOR EXCEPT AS SHOWN HEREON.
  - THE PURPOSE OF THE ELEVATIONS AND DRAINAGE FLOW ARROWS SHOWN HEREON IS TO PROVIDE THE CITY OF ST. PETERSBURG WITH THE AS-BUILT INFORMATION FOR THE LOT GRADING.

### CURVE TABLE

Curve #	Radius	Delta	Arc/Length	Chord	Chord Bearing
C8	35.00'	26°51'30"	16.41'	16.26'	S.76°02'09"E.

Total Lot Area in Square Feet ±  
  
1360

VERTICAL DATUM NOTE:  
THE ELEVATIONS SHOWN HEREON ARE REFERENCED TO (NAVD 88).

← = Drainage Flow Arrow



21510881

This Survey Certified To : TaylorMorrison

### REVISIONS

Description	Date	Dwn.	Ck'd	Order No.
Building Stakeout	6/30/14	WEN	BDD	21414949
Re-Do Building Stakeout	8/23/14	WEN	BDD	21416639
Form Board Tie-In	9/12/14	JAR	BDD	21416644
Final Survey	3/06/15	TJW	CJA	21510881

### SURVEYORS CERTIFICATE

The survey represented hereon conforms to the requirements of Chapter 5J-17, Florida Administrative Code in effect on the Survey Date shown.

*Scott R. Fowler 3/6/15*

SCOTT R. FOWLER DATE OF SIGNATURE

FLORIDA REGISTERED LAND SURVEYOR NO. 5185

Survey Date: 03/05/15



2012

Tampa (813) 621-7841  
Fax (813) 664-1832  
Web Page: www.lesc.com

**LANDMARK**  
ENGINEERING & SURVEYING CORPORATION

8515 Palm River Road, Tampa, Florida 33619  
CERTIFICATE OF AUTHORIZATION NO. LB 3913